

LSAW Foundation

Promoting and advancing the surveying, mapping and
land information professions

Message from the Chair

Land Surveyors' Association of Washington Foundation

Welcome to our fifth Annual Report, meant to provide you basic information regarding our corporate operations and provide information ensuring your donation dollars are being managed for the benefit of qualifying students who are enrolled in a Surveying degree program or certificate program.

The Foundation is managed by a seven-member Board of Directors. Each Director is appointed to a four-year term. I currently serve as Chair and have one year remaining for my term. The Foundation strives to keep overhead costs as low as possible. For instance, Board members do not receive reimbursement for mileage, lodging or meal expenses when traveling to attend Board meetings.

I hope you all have had a successful year. Many of you have seen an increase in your workload and as such, struggle finding skilled staff. I truly believe we will continue to feel this pressure as the economy continues to recover. More than ever our profession needs your assistance promoting both our professional services and supporting our educational institutions.

Surveying education programs all over the United States are under extreme pressure to increase enrollment. These programs must be complete with other programs. As professionals, we should be setting higher standards for ensuring our profession continues and provide financial support to both students and even college programs. With your financial support the Foundation can provide more impactful scholarships. There are a number of ways you can provide financial assistance; become a member of the Foundation for \$35.00, a one-time or yearly donation, donation of an auction item, or simply making a CASH donation.

I want to thank the 2016 Directors for their personal commitment and support this past year. For most of us, we feel a strong desire to support the Foundation, our profession, and our future. Students deserve our financial assistance as they prepare to become professionals.

As we enter 2017, we The LSAW Foundation, also enter our tenth year as a corporation supporting students attending higher education programs. The LSAW Foundation will continue with your financial assistance meeting our mission.

I want to thank Jon Purnell, PLS, as our Webmaster and acting as our editor for producing this Annual Report. Also, I want to thank you all for your continued financial support, but mostly for supporting our future. Please consider a donation or volunteering your time serving as a Director.

Kenneth W. Swindaman, PLS

IN THIS ISSUE:

Scholarship Apps Available	2
Board of Directors	2
Financial Report	3
Scholarship Report	4
Goals and Strategies	5
Meet the Directors	6

"More than ever our profession needs your assistance promoting both our professional services and supporting our educational institutions"

--Ken Swindaman

2017 Scholarship Apps Available Now!

Scholarship applications for 2017 are now available for downloading from the Foundation Website. To get your application, go to

<http://www.l sawfoundation.org/scholarships/scholarshipapplication.html>

Applications are available in both Microsoft Word and Adobe PDF formats. To be eligible for consideration, applications must be received or postmarked by June 1, 2017.

Mail your completed application to:

Rich Waltrip, Scholarship Chairperson, LSAW Foundation, 702 West 21st Avenue
Spokane, WA 99203 (richwaltrip@gmail.com)

You are eligible to be considered for an LSAW scholarship if you are enrolled in a two-year Washington school that offers Land Surveying courses, or if you are enrolled in classes in the Geomatics programs at the Oregon Institute of Technology. Other restrictions may apply, see the application and instructions for details.

Along with the application form, you should also download the Application Instructions document from the website. Remember to include your college transcripts (if any) and a copy of the course curriculum of your school's surveying program. You must also sign and date your application, or it will not be considered.

*For scholarship
applications and
instructions, visit*

www.l sawfoundation.org

Board of Directors and Past Directors

Current Board

Ken Swindaman – Chairman (Vice Chairman 2007-2013)

Rich Waltrip – Director (2007-present), Vice Chairman, Scholarship Chair

Carla Merritt – Director (2014 –present), Treasurer (2015-present)

John (Tom) Brewster – Director (2013-present)

John Thomas – Director (2013-present)

Greg Brooks – Director (2015-present)

Erynn Sullivan – Secretary (2016-present)

Past Members of the Board

John Thalacker – Founder and Chairman of the Board of Directors (2007-2013)

Walter O. Dale – Founding Director, Treasurer (2007-2011)

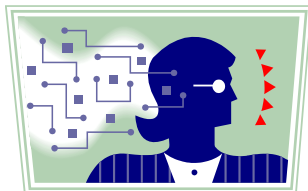
James Main – Founding Director (2007-2011)

Vicky Thalacker – Founding Director and Scholarship Chair (2007-2013)

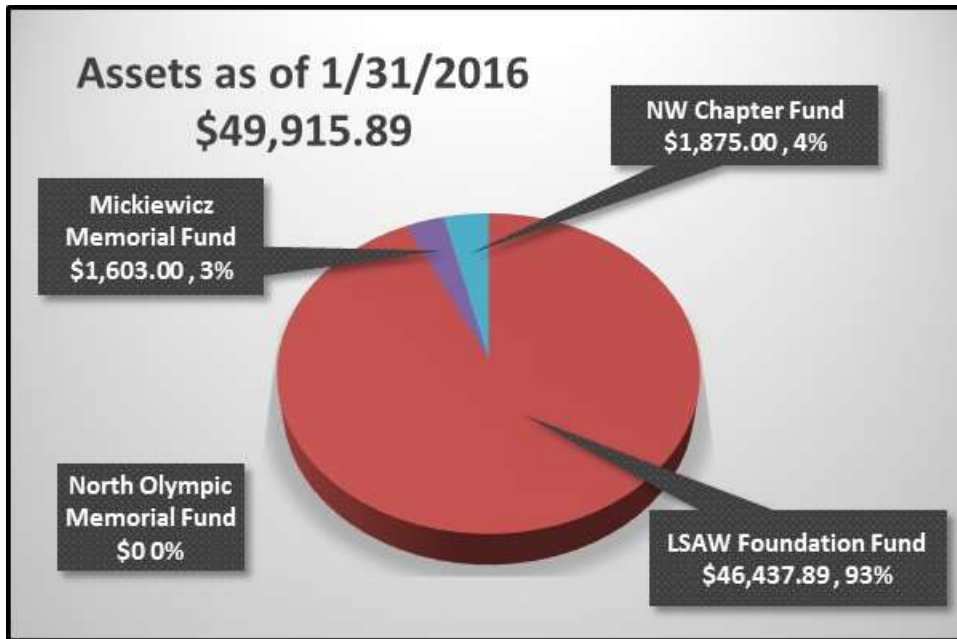
Jon B. Purnell – Founding Director, Secretary (2007-2012)

Michael (Mick) Sprouffske Jr. – Treasurer (2011-2015)

John R. Christensen – Director (2011-2016)



Financial Status Report



Assets

The Foundation had a total of \$49,915.89 in its accounts as of 12/31/2016. At inception, the **LSAW Auxiliary** transferred \$14,394 to the Foundation for annual scholarship awards. Those funds have been distributed to scholarship recipients

Snohomish chapter of LSAW funds the Mike Mickiewicz Memorial Scholarship, contributing donating \$1303 in 2016. Currently, \$1603 remains in that account.

Northwest chapter funded its scholarship awards with a \$1500 contribution in 2016; \$1875

remains in that account.

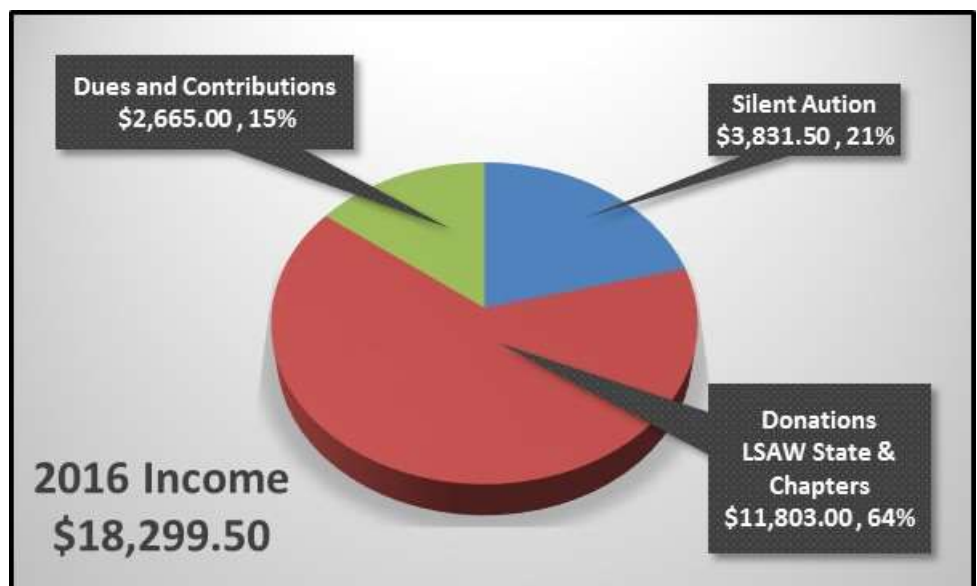
For 2016, **North Olympic Chapter** contributed \$2000 to fund its North Olympic Surveyors’ Memorial Scholarship award and a like amount has been allocated for 2017.

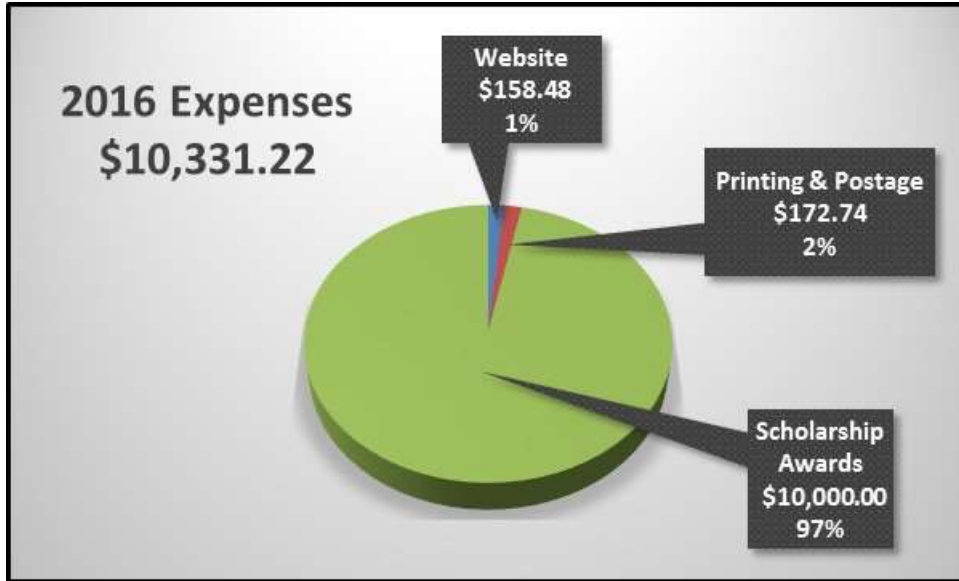
The **LSAW Foundation Scholarship Fund** totals \$46,437.89. In 2016, that fund received \$7000 in support from the **LSAW Board of Trustees** as well as \$3831.50 in earnings from Foundation fundraising activities and membership dues.

Income by Source

In 2016 the Foundation received a total of \$18,299.50 in income, an increase of \$3834.87, for a 26% gain over 2015. Of this total, \$11,803 came from grants made by the **State LSAW**, and the **Snohomish, Northwest and North Olympic** chapters and membership dues. Last year’s auction earned \$3831.50

The **Foundation Board** thanks one and all for your generous and continued support.





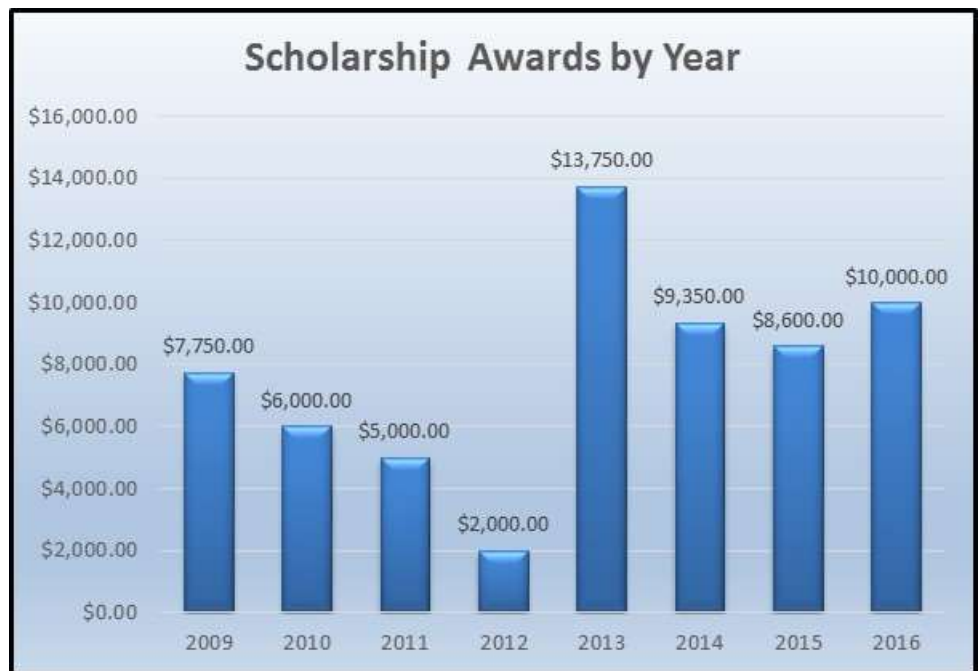
2016 Expenses

The Foundation strives to keep overhead costs as low as possible. For instance, Board members do not receive reimbursement for mileage, lodging or meal expenses when traveling to attend Board meetings.

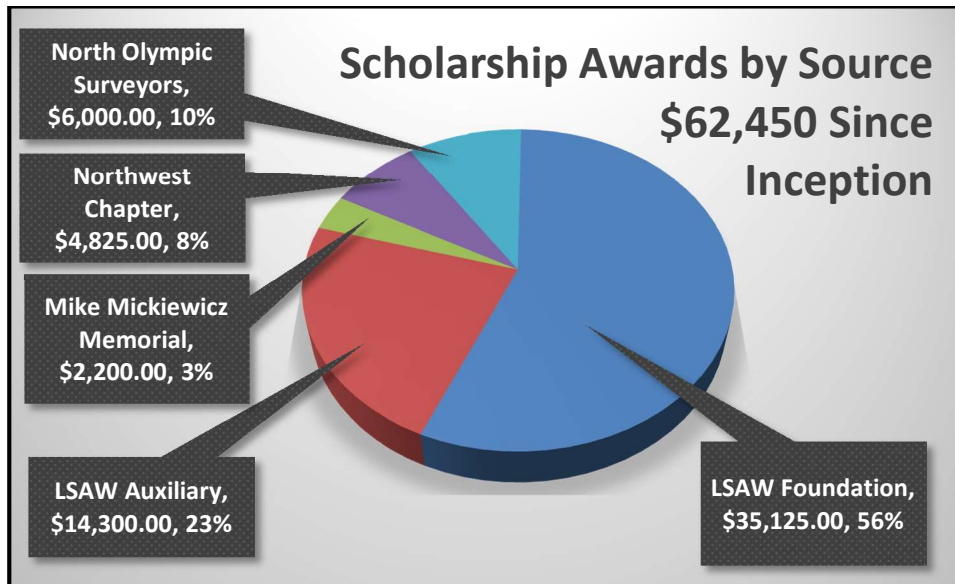
In 2016, the Foundation distributed \$10,000 in scholarship awards—this accounts for 97% of its expenses for the year. Other expenses included \$158.48 for website hosting fees and \$172.74 for printing and postage. Only 3% of its expenses went toward covering overhead costs for 2016.

Scholarships: \$10k Awarded in 2016

In 2016, the LSAW Foundation provided \$10,000 in scholarship awards to nine students attending four Washington colleges and the Oregon Institute of Technology. This brings our total amount to **\$62,450 since 2009**. We are **generously supported by LSAW**, as well as through scholarships provided by the **Northwest Chapter, the Snohomish Chapter** (Mike Mickiewicz Memorial Scholarship) and the **North Olympic Chapter** (North Olympic Surveyors Memorial). We are also supported by LSAW Foundation members through membership fees and donations and supported by LSAW members and vendor sponsors through the auction activities at the LSAW Annual Conference. As in previous years, we strive for balance between healthy award amounts and continued financial growth and stability.



--Rich Waltrip, LSAW Foundation Scholarship Committee Chair



Did you know...
your LSAW Chapter can sponsor a dedicated scholarship, or support the general LSAW Foundation Scholarship Fund?

Goals and Strategies

The overall mission of the Foundation is to **promote educational, scientific and charitable activities in the fields of surveying, mapping, and land information sciences.**

It seeks to do this by **providing financial support, in the form of scholarships and grants,** to students entering the profession and to educators and others who advance and improve the profession and its standing with the general public in the State of Washington

To make this possible, the Foundation seeks to build a self-supporting endowment that will allow it to award **impactful** scholarships and grants to deserving surveying students and educational programs perpetually. If this goal is to be accomplished, a portion of the funds we receive must be saved and invested. Otherwise, the Foundation would function in a pay-as-you-go fashion and scholarship and grant

awards would be vulnerable to market conditions and totally dependent upon the continuing and continuous generosity of donors.

In its fund raising activities, the Foundation seeks to avoid competing with other established groups such as the George Walker Fund, LSAW Chapter fundraisers such as seminars, and the LSAW State Conference. This makes financial support from LSAW at the State and Chapter level essential to the Foundation's mission.

The Board continues to develop its strategic plan, which will provide a framework as it seeks to fulfill its mission in 2016 and beyond.

Foundation Board for 2017



Chairman, Ken Swindaman, PLS has always supported higher education. While attending Oregon Institute of Technology he was awarded a \$500 PLSO scholarship. He understands the importance of supporting students pursuing higher education. Ken Served on the Gorge F. Walker Memorial Scholarship Fund prior to serving on the LSAW Foundation. He has been licensed in Oregon since 1996, and in Washington since 1997. Ken is one of the founding Directors of the Foundation and served as its Vice-Chairman from 2007-2013. He is a former president of LSAW. He has recently returned to the United States from a special assignment in Denmark.



Vice-Chairman, Rich Waltrip, PLS received a B.S. in Geology from the University of Missouri in 1978 and completed several surveying courses at various colleges in subsequent years. He is licensed in Washington, Idaho, Montana and Missouri. He believes in the increasing importance of higher education for personal development, as well its benefit to the profession. He has been an active member of LSAW since moving to Spokane, Washington in 1999, serving as president and trustee of the Inland Empire Chapter. Rich has served as a director of the LSAW Foundation since its inception in 2007 and Foundation Scholarship Committee Chair since 2013. Besides working for a living, he enjoys camping, hiking and playing music.



Secretary, Erynn Sullivan's interest in surveying and land use came late, after several years working for YMCA, then in retail management for well over a decade; she enjoys the novelty and creativity involved in field surveying, and relishes working outdoors. Most days. Erynn graduated with an Associate's degree in Land Surveying from Renton Technical College in 2010, a recipient of several generous scholarships provided by the Washington surveying community. She then earned a Bachelor's degree in Environmental Science from Huxley College, with the goal of delineating and mapping wetlands and streams, and a not-quite-Minor in Environmental Policy.

Erynn has served LSAW as secretary for the Snohomish Chapter, and as a member of the Annual Conference committee. In 2011, the Snohomish Chapter honored Erynn as its Associate of the Year; she also served on the first all-female Executive Committee of any LSAW chapter. She was a member of the summit team on the 2010 Mt. Rainier resurvey, sponsored by LSAW, and has given short lectures on the intersection of surveying and environmental consulting.



Treasurer, Carla Meritt, PLS has been a licensed professional land surveyor since 2003, currently holding licenses in both Washington and Oregon. She has been working in the private sector of the land surveying industry since 1995 and currently manages a division of the surveying group at MacKay Sposito in Vancouver, Washington. She has been a member of LSAW since 2003 and held various leadership positions within the organization, including Lower Columbia chapter president and trustee. She served as LSAW's liaison to the OIT Geomatics Advisory Committee from 2007-2012. Carla has been a part-time adjunct instructor at Clark College, teaching the legal description class, since 2011. She has been a member of the Clark College Survey Advisory Committee since 2007, and held the position of Advisory Committee Chair from 2010-2012. In 2012 she was appointed as LSAW's delegate to WFPS. With a background and a degree in Education, Carla is passionate about promoting recruitment and funding for students entering into the surveying profession and is looking forward to continued service on the Foundation Board.

Foundation Board for 2017



Director, John Thomas (Tom) Brewster, PLS was born and raised in Bellingham, Washington. He enrolled in Bellingham Technical College's surveying program in 1988, after realizing that his B.A. in Philosophy from Washington University in St. Louis was not going to pay the bills effectively. Starting work as a survey technician in early 1990, he moved to Wilson Engineering in 1994, becoming their principal GPS and Hydrographic Technician. In 2001 he sat for and passed the LSIT exam, and received his professional license in 2007. He served on the Technical Advisory Board for the Surveying and Civil Engineering programs at Bellingham Technical College for twelve years, and took a leave of absence to teach there for a full year. As an instructor, he saw the impact that even a relatively small scholarship can have on a student's ability to perform and succeed. He sees his service on the Foundation Board as an opportunity to re-engage with surveying students, and perhaps help to "spread the word" about the scholarships the Foundation administers. Tom joined the Board in 2013



Director, John Thomas, PLS is a graduate of Oregon State University's Forest Engineering program, received his Washington license in 1978, and is also licensed in Oregon and California. After a stint with the Washington Department of Natural Resources, he worked in dredging and heavy construction from Alaska to California and later with Olson Engineering in Vancouver, Washington. John is recently retired from WSDOT as a Cadastral Surveyor. John has long participated in the TrigStar program, actively teaches Boy Scouts about land surveying through the Surveying Merit Badge, has taught GPS and Surveying Ethics courses at Clark College and, "teaches young men old-time surveying at Fort Vancouver National Park. John joined the Foundation Board in 2013 to further its mission of promoting education and providing scholarships to qualifying students. He was President of the LSAW Board of Trustees for 2012 and will serve on the LSAW Board of Trustees for one more year as Past President. John resides in Vancouver where he and, with his wife of 33 years, raised their three children.



Director, Greg Brooks, PLS is a graduate of California State Polytechnic University, Pomona, where he received his BS in Civil Engineering. His course studies were within the Surveying tract of the Civil Engineering program, and he has been licensed in Washington since 2008. Greg's passion for supporting education, and golf, has served him as he has been the Chairman/Organizer for the George F. Walker Memorial Scholarship Golf Tournament since 2007. He has also served on the Board of Director's for the Walker Scholarship Committee for the past 4 years. Greg has been actively involved with LSAW since moving to Washington in 1998, serving for several years as the North Puget Sound Chapter Secretary, and is currently starting his 4th year as the Snohomish Chapter Treasurer – Greg was also the LSAW Associate Surveyor of the Year for 2005. Greg currently holds a position as a Senior Civil Engineering Specialist (aka Surveyor) with Seattle Public Utilities, where he started last June after 17 years in the private sector with CH2M HILL in Bellevue, WA.