

# LSAW Foundation

Promoting and advancing the surveying, mapping and land information professions

## 2013 Scholarship Apps Available Now

### IN THIS ISSUE:

Supported by You	2
2012 Board of Directors	2
Financial Status	3 and 4
Fund Raising, Goals and Strategies	4
2013 Board of Directors	5

Scholarship applications for 2013 are now available for downloading from the Foundation Website. To get your application, go to <http://www.lsaawfoundation.org/scholarships/scholarshipapplication.html>

Applications are available in both Microsoft Word and Adobe PDF formats. To be eligible for consideration, applications must be received or postmarked by July 15,

2013. Mail your completed application to:

Vicky Thalacker,  
Scholarship Chairperson  
LSAW Foundation  
41 Griffin View Lane  
Friday Harbor, WA 98250

You are eligible to be considered for an LSAW scholarship if you are enrolled in a two-year Washington school that offers a Land Surveying curriculum, or if you are enrolled in classes in the Geomatics program at the

Oregon Institute of Technology. Other restrictions may apply, see the application for details. Along with the application form, you should also download the Application Instructions document from the website. Remember to include your college transcripts (if any) and a copy of the course curriculum of your school's surveying program. You must also sign and date your application, or it will not be considered.

## Ron Torrence Wins 2012 Raffle, Surrenders Custody

No, that's not **Ron Torrence**, Snohomish County Surveyor, at the eyepiece!



But Ron did buy the winning raffle ticket for this carving of an old time surveyor at the 2012 LSAW Annual Conference. Since then it has graced his desktop, but Ron has graciously surrendered custody of the piece for this year's raffle at the annual conference.

Proceeds from the raffle benefit the Foundation's scholarship fund. The carving is fashioned by hand from Western White

Pine, by **Elmer Schultes** his name here of Delta, British Columbia

You can see the carving for yourself--visit us at the conference where you can purchase raffle tickets for only \$5 each.

The Foundation Board of Directors and past and future scholarship recipients thank you for stopping by, and we hope to see you at the conference.

- 2013 Scholarship Applications now available at [lsawfoundation.org](http://lsawfoundation.org)
- Old-time surveyor sighted at 2013 LSAW Conference

*“The Foundation receives substantial support from the LSAW Auxiliary, State LSAW and local chapters including the Snohomish and Northwest Chapters”*

## LSAW Foundation: Supported by You

The LSAW Foundation was formed to provide a means whereby people interested in advancing the profession could work together to provide financial assistance to deserving students, educators and others who work to enhance the standing of the profession in Washington State. Formed in 2007 at the LSAW Annual Conference in Spokane, the Foundation has since attained IRS 501(c)3 non-profit status.

The Foundation is run by a seven-member Board of Directors. It holds an

annual membership meeting and periodic Board meetings. Visit the Foundation website at [www.lsafoundation.org](http://www.lsafoundation.org) for information on our next meeting.

The Foundation scholarship fund has received substantial financial support from the **LSAW Auxiliary**, and from the **Land Surveyors’ Association of Washington** (see, Financial Status, page 3).

For 2013, the **Snohomish Chapter of LSAW** added its support by creating the **Mike Miczwietz**

**Memorial Scholarship.** The **Northwest Chapter of LSAW** has committed to supporting its own scholarship fund in 2013 as well. The Board wishes to recognize and thank all contributors for their generosity.

The scholarship fund is also supported by membership fees and Foundation fund-raising activities such as this year’s raffle-see article on page 1.



## 2012 Board of Directors and Past Directors

### 2012 Board

John Thalacker – Chairman of the Board of Directors (2007-present)

Ken Swindaman- Vice Chariman (2007-present)

Michael (Mick) Sprouffske Jr - Treasurer (2011-present)

Jon B. Purnell – Secretary (2007-2012)

Vicky Thalacker – Director and Scholarship Chair (2007-2012)

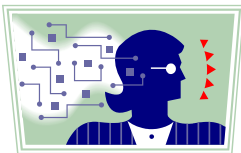
Rich Waltrip – Director (2007-present)

John R Christensen – Director (2011- present)

### Past Members of the Board

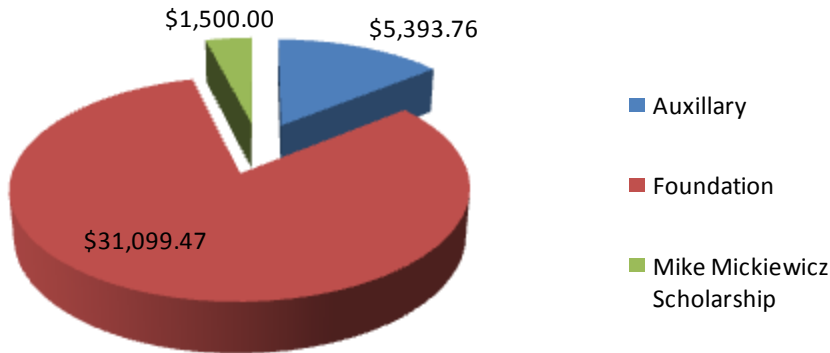
Walter O. Dale – Treasurer (2007-2011)

James Main – Director (2007-2011)



## Financial Status

### Assets as of 12/31/12



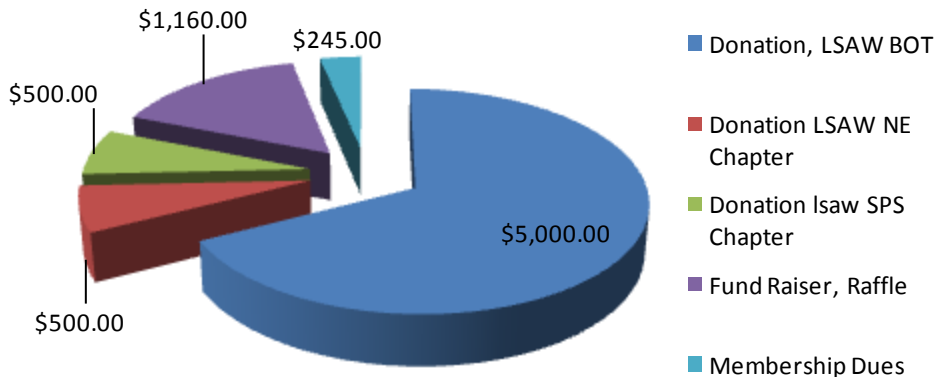
The Foundation had a total of \$37,993.23 in its accounts as of 12/31/2012. At its inception, the Auxiliary transferred \$14,394 to the Foundation for annual scholarship awards. \$5393.76 remains in the LSAW Auxiliary Fund. Snohomish chapter of LSAW contributed \$1500 for the Mike Mickiewicz Scholarship Fund. The remaining \$31,099.47 is from annual contributions from the LSAW Board of Trustees, and contributions from North East and South Puget Sound Chapters, Foundation fundraising activities and membership dues.

For 2012, the Foundation received a total of \$7405.00 in income. Of this total, \$5000.00 was a contribution from the **LSAW Board of Trustees**.

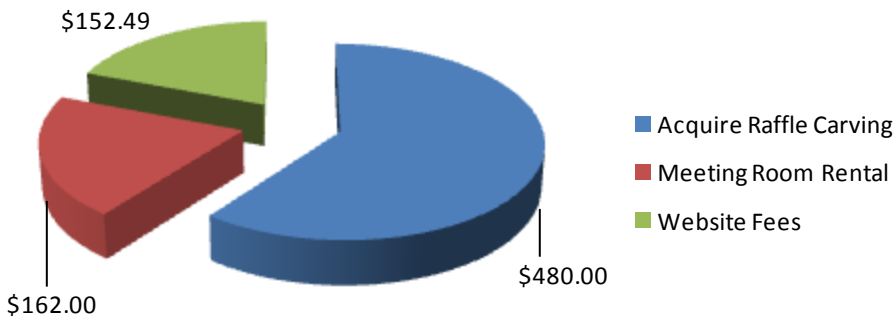
This year, the Foundation received \$500.00 donations from both the **Northeast and South Puget Sound Chapters of LSAW**.

\$1160.00 was earned via Foundation fund raising activities and the remaining \$245.00 was generated from membership fees.

### Income 2012



### Overhead



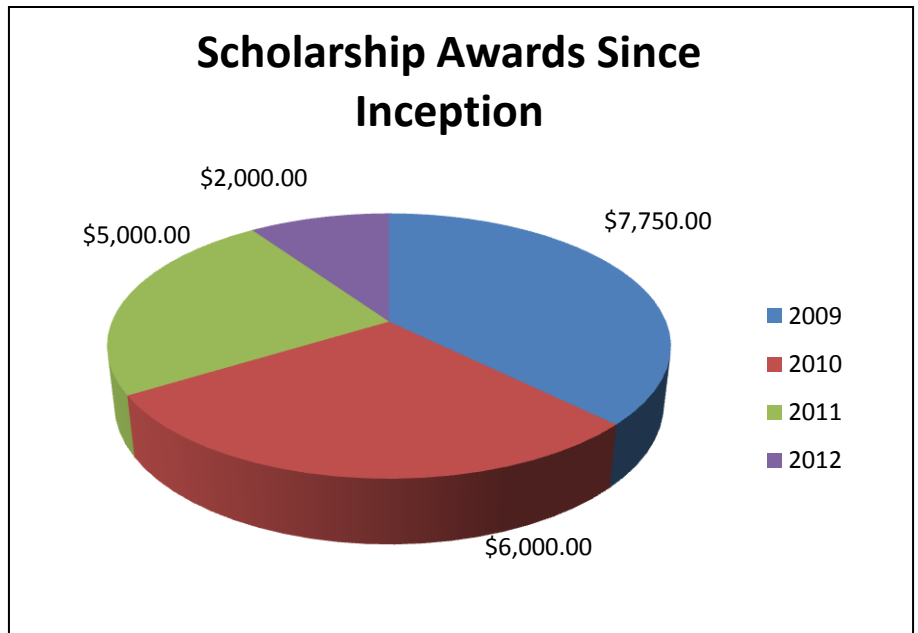
The Foundation strives to keep overhead costs as low as possible. For instance, Board members do not receive reimbursement for mileage, lodging or meal expenses when traveling to attend Board meetings.

For 2012, it spent \$162.00 for meeting room rental fees, and \$152.49 to maintain its website. These are the only recurring expenses the Foundation has at present. This year it also purchased a carving of an Old Time Surveyor for its 2012 Raffle for \$480.00 Total overhead for the year was \$794.49.

Since 2009, the Foundation has disbursed \$20,750 in 17 scholarship awards.

Students enrolled in two-year degree programs at Bellingham Technical College, Renton Technical College and Clark College have benefited from scholarship awards, as have students enrolled in the four-year program at the Oregon Institute of Technology.

Award amounts are determined in part by the number of and quality of applications received, evaluation of applications by the Board of Directors, and instructions we receive from donors.



## Fund Raising, Goals and Strategies

*“Since its inception in 2007 the Foundation has awarded \$20750 in scholarships to 17 recipients”*

The overall mission of the Foundation is to **promote educational, scientific and charitable activities in the fields of surveying, mapping, and land information sciences.**

It seeks to do this by **providing financial support, in the form of scholarships and grants**, to students entering the profession and to educators and others who advance and improve the profession and its standing with the general public in the State of Washington

To make this possible, the Foundation seeks to build a self-supporting endowment that will allow it to award scholarships and grants to deserving surveying students and educational programs perpetually. If this goal is to be accomplished, a portion of the funds we receive must be saved and invested. Otherwise, the Foundation would function in a pay-as-you-go fashion and

scholarship and grant awards would be vulnerable to market conditions and totally dependent upon the continuing and continuous generosity of donors.

In its fund raising activities, the Foundation seeks to avoid competing with other established groups such as the George Walker Fund, LSAW Chapter fundraisers such as seminars, and the LSAW State Conference. This makes financial support from LSAW at the State and Chapter level essential to the Foundation’s mission.

The Board continues to develop its strategic plan, which will provide a framework as it seeks to fulfill its mission in 2013 and beyond.

## Foundation Board for 2013

**John Thalacker, PLS** has been a licensed professional land surveyor since 1963. Licensed in Washington and five other states, he has actively promoted and advanced the profession by serving on the LSAW Board of Trustees (President, 1981), Chairman of West Fed and Chairman of the NSPS Board of Governors in 1982, and President of NSPS in 1985. He was involved in the national effort to expand surveying curricula and education programs. In 2007 he was appointed by LSAW President James Main to the Foundation Committee, and pursued the construction of the articles and bylaws of a non-profit 501©3 corporation whose purpose was to preserve the LSAW Auxiliary scholarship program and to pursue additional surveying related educational activities. He currently serves as the Foundation Board Chairman. **Vicky Thalacker**, John's wife, served as a member of the Foundation Board of Directors and Scholarship Committee chair from 2007 through 2012. She was involved with the LSAW Ladies Auxiliary beginning in 1983 and with that group's scholarship program in beginning in 1992. John and Vicky reside in Friday Harbor, Washington.

**Ken Swindaman, PLS** has always supported higher education. While attending Oregon Institute of Technology he was awarded a \$500 PLSO scholarship. He understands the importance of supporting students pursuing higher education. Ken Served on the Gorge F. Walker Memorial Scholarship Fund prior to serving on the LSAW Foundation. Ken is a Principal at Apex Engineering PLLC, in Tacoma, WA. He has been licensed in Oregon since 1996, and Washington since 1997. Ken is one of the original Directors of the Foundation and has served as its Vice-Chairman since 2007. He is a former president of LSAW.

**Michael (Mick) Sprouffske Jr., PLS** is a third generation Land Surveyor. Licensed since 2002, his fulltime career started in 1989 after serving four years in the US Navy Submarine Service. He worked for several private firms in the beginning of his career including Manke Lumber Co. Mick's Public Sector employment began in 1998 with Mason County Public Works. In 2005, he moved to the Department of Natural Resources in Olympia serving as Manager of the Public Land Survey Office. In December of 2012 he transferred to the State Land Survey Unit where he is the equivalent of a DNR Region Surveyor, but is responsible for cadastral surveys for both the South Puget Sound Region as well as portions of the Pacific Cascade Region. Mick was appointed to the Foundation Board in 2011 and serves as its Treasurer. He serves on the Board because he believes in providing opportunities for students who are studying Land Surveying and Mapping. He is former president of LSAW.

**Rich Waltrip, PLS** has over 30 of years experience in the land surveying profession. He has been an active member of LSAW since moving to Spokane, Washington in 1999, serving as president and trustee of the Inland Empire Chapter, as well as a director of the LSAW Foundation since it's inception in 2007. He is licensed in and a member of professional societies for Washington, Idaho, Montana and Missouri. His professional expertise and interests include right-of-way and land title, as well as the application of advanced technologies and GIS in the practice of surveying. He received a B.S. in Geology from the University of Missouri in 1978 and completed several surveying courses at various colleges in subsequent years. Besides working for a living, he enjoys camping, hiking and playing music.

**John R. Christensen, PLS** began his surveying career in 1992 with the City of Moses Lake, Washington and received his professional license in 2002. John moved to Kennewick in 2008 where he is employed with the Franklin County Department of Public Works. Appointed to the Foundation Board in 2011, he is honored to be a part of its continuing efforts to assist students who are pursuing careers in surveying.

**John Thomas, PLS** is a graduate of Oregon State University's Forest Engineering program, received his Washington license in 1978, and is also licensed in Oregon and California. After a stint with the Washington Department of Natural Resources, he worked in dredging and heavy construction from Alaska to California and later with Olson Engineering in Vancouver, Washington. John is currently a Cadastral Surveyor with WSDOT. John has long participated in the TrigStar program, actively teaches Boy Scouts about land surveying through the Surveying Merit Badge and has taught GPS and Surveying Ethics courses at Clark College. John joined the Foundation Board in 2013 to further its mission of promoting education and providing scholarships to qualifying students. He was President of the LSAW Board of Trustees for 2012 and will serve on the LSAW Board of Trustees for one more year as Past President. John resides in Vancouver where he and, with his wife of 33 years, raised their three children.

**John Thomas (Tom) Brewster, PLS** was born and raised in Bellingham, Washington. He enrolled in Bellingham Technical College's surveying program in 1988, after realizing that his B.A. in Philosophy from Washington University in St. Louis was not going to pay the bills effectively. Starting work as a survey technician in early 1990, he moved to Wilson Engineering in 1994, becoming their principal GPS and Hydrographic Technician. In 2001 he sat for and passed the LSIT exam, and received his professional license in 2007. He served on the Technical Advisory Board for the Surveying and Civil Engineering programs at Bellingham Technical College for twelve years, and took a leave of absence to teach there for a full year. As an instructor, he saw the impact that even a relatively small scholarship can have on a student's ability to perform and succeed. He sees his service on the Foundation Board as an opportunity to re-engage with surveying students, and perhaps help to "spread the word" about the scholarships the Foundation administers. Tom joined the Board in 2013